
Peirce PYP Exhibition

5th Grade



Mrs. Kimberly Lebovitz - PYP Coordinator



Transdisciplinary Theme:
HOW WE ORGANIZE OURSELVES

An inquiry into:

the interconnectedness of human-made systems and communities;
the structure and function of organizations; societal decision-making;
economic activities and their impact on humankind and the
environment.

Central Idea:

Economics contribute to personal and societal
decision making

The Learning Community

Students:

- AGENTS of their own learning
- RESPONSIBLE for Collaboration in groups with a mentor
- ENGAGES in Inquiry and Action
- DEMONSTRATE Approaches to Learning and Learner Profile
- EXPLORE a variety of strategies and resources
- REFLECT throughout the exhibition process

Teachers:

- FACILITATE the Exhibition process
- SUPPORT student inquiries
- ENSURE individual participation through collaboration
- DEVELOP agreements with students on academic honesty
- EVALUATE the exhibition process

The Learning Community, cont'd

Mentors:

- GUIDE students through setting and meeting their goals
- ASK questions
- SUGGEST resources such as facilitating interviews or contacts
- SUPPORT interpretation of difficult materials
- MEET regularly with groups

Parents:

- CONTRIBUTE expertise and knowledge where appropriate
- SUPPORT students through the development of their inquiries
- CELEBRATE with the students at the end

THINKING ABOUT MY EXHIBITION

Connecting to Local
and Global Issues

Reflect about discussions
surrounding local and global issues

Describe your interests, ideas,
passions, strengths, experiences -
connect to local and global issues

Choose the local and global issue to
explore

Reflect on what you already know
about the local and global issue

Exhibition Planning

Students will...

- Work with their mentor, teachers and peers
- Develop lines of inquiry
- Decide on conceptual understandings
- Develop Action Plan
- Create Learning Goals and Success Criteria
- Develop and maintain a timeline

INQUIRING

How will I explore my topic?

Collaboration - peers, teachers, mentors, members of the community

Develop Evolving Questions to inform the inquiry

Reflect on the skills and attributes that are being developed and demonstrated

Self Assess your learning and how you are using feedback

Sharing My Exhibition



REFLECTION

On the Process and Journey through
the Exhibition Inquiry

On Skills

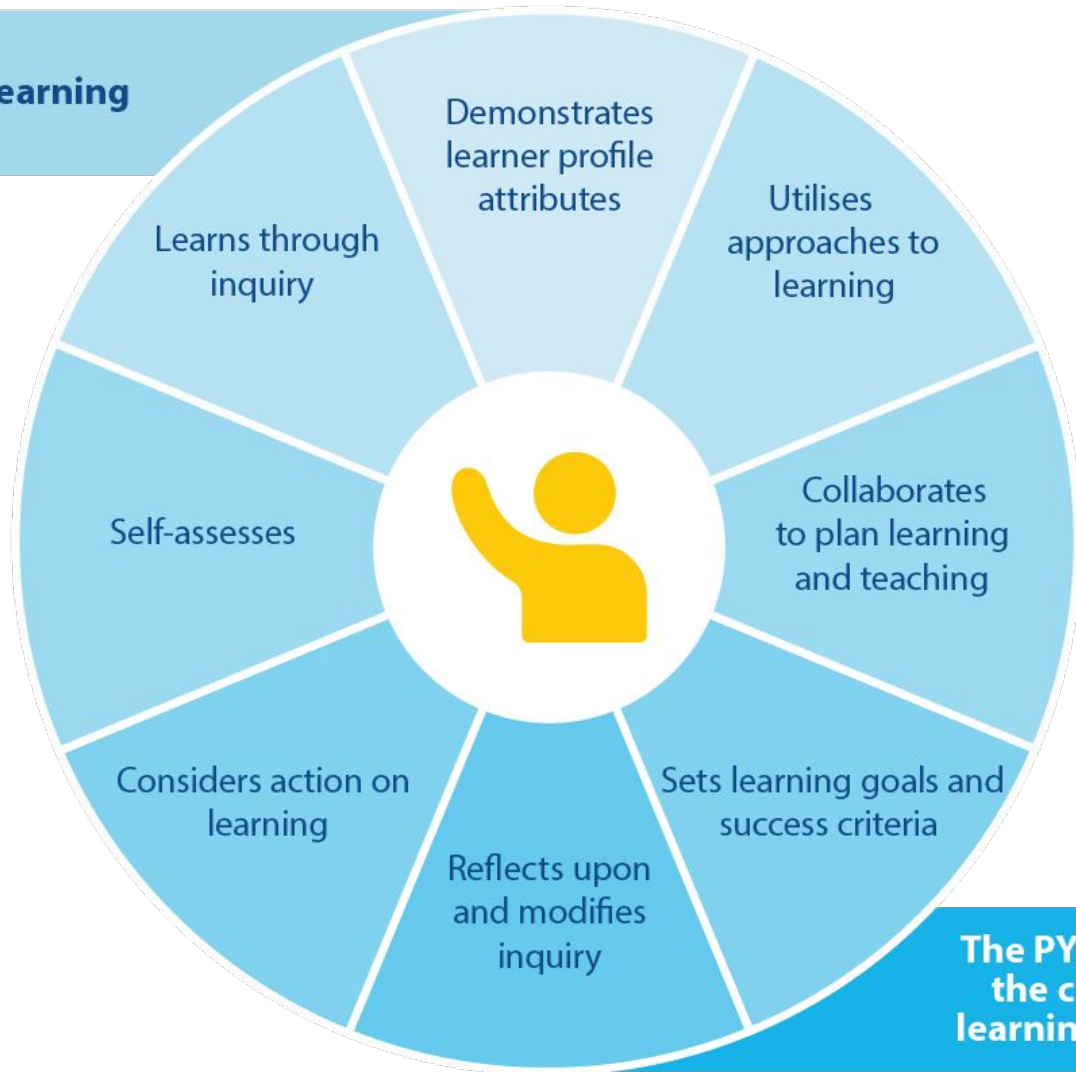
On Learner Profile

On the Action you took

On Learning Goals and Success
Criteria

On how to continue the Inquiry

Prior PYP learning



**The PYP exhibition:
the culminating
learning experience**

THE RUBRIC

THE TIMELINE

Helen C. Peirce School of International Studies

EXHIBITION CONTRACT

I agree that:

1. I will complete all assigned work. (**Principled**)
2. I will listen to others and respond to them in a respectful and constructive way. (**Communicator**)
3. I will make good use of class time to complete my assignments so I have time outside of school to do other things. (**Well-Balanced**)
4. I will share my thoughts and feelings with others. (**Risk-taker**)
5. I will ask clarifying questions. (**Inquirer**)
6. I will think deeply about my self-generated questions. (**Thinker**)
7. I will share the workload with teammates in an equitable manner. (**Caring**)
8. I will review my work for clarity and cohesion. (**Reflective**)
9. I will be tolerant and open to the ideas of others. (**Open-minded**)
10. I will review a wide range of perspectives on my topic to gain a well-developed understanding. (**Knowledgeable**)

I will be responsible and adhere to these agreements.

WONDERINGS?

CONTACT INFORMATION

Kimberly Lebovitz

PYP Coordinator

773-534-2841

kclebovitz@cps.edu